

FREEHOLD



House - Detached (EPC Rating: C)

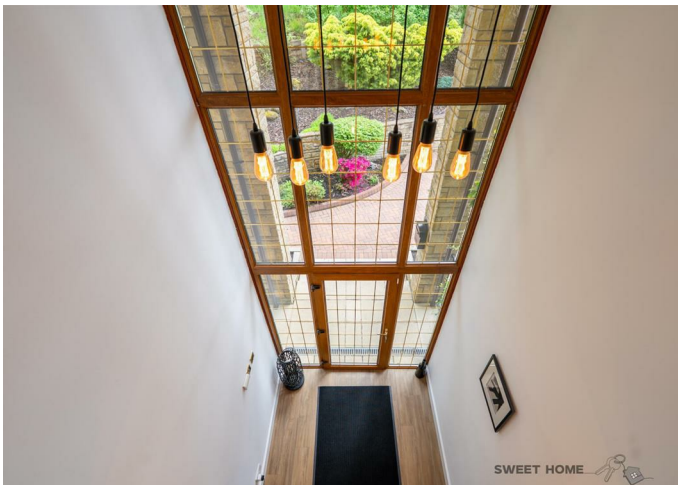
45 GLEN NOBLE, CLELAND, MOTHERWELL, ML1 5FB

Offers over

£584,995

FEATURES

- Detached villa in Glen Noble
- Double height reception hall
- Private Study
- Private garden with pizza oven
- 6 spacious bedrooms
- Master with en-suite and balcony
- Driveway and double garage
- Viewing highly recommended



**SWEET
HOME**



6 Bedroom House - Detached located in Motherwell

Call us on

01236 677500

sales@sweet-home.co.uk

<https://sweet-home.co.uk/>

Caroline Morrison of Sweet Home is thrilled to present this exquisite six-bedroom detached Villa, a true standout in the market, this impressive property spans a generous 3,197 square feet, expertly designed for contemporary living with a perfect balance of style and functionality.

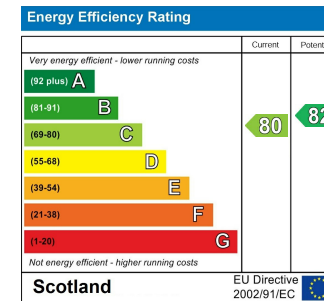
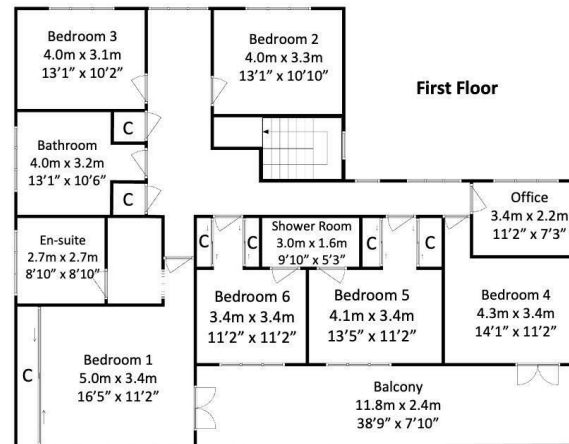
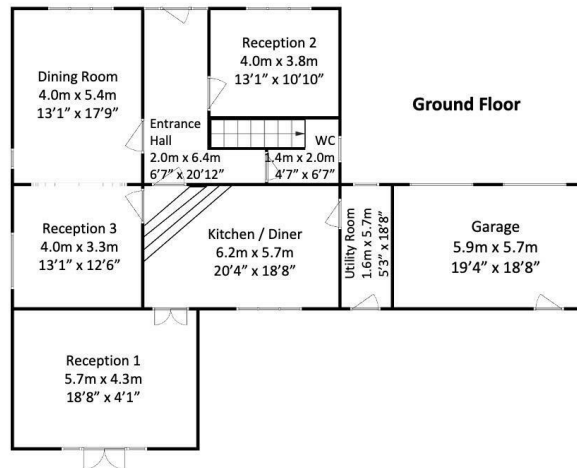
Upon entering, you are welcomed by a grand double-height reception hallway that exudes elegance. The ground floor features three sophisticated reception rooms, including a formal lounge that seamlessly connects to a dining area—ideal for entertaining guests. The second lounge at the rear opens onto a private decking area, complete with a cozy sitting space, BBQ zone, and a delightful pizza oven hut—perfect for hosting garden gatherings or enjoying peaceful family moments.

At the heart of this home lies the magnificent kitchen and breakfast room, beautifully appointed with high-quality cabinetry and striking work surfaces. Adjacent, the utility room offers added convenience, accommodating laundry appliances and providing access to the spacious double garage.

The upper floor reveals a spacious landing leading to six generously sized bedrooms, with a rear balcony accessible from bedrooms 1 and 4. Each room boasts ample storage, while the master suite

Council Tax Band

G



Agents Note: Whilst every care has been taken to prepare these particulars, they are for guidance purposes only. All measurements are approximate and are for general guidance purposes only and whilst every care has been taken to ensure their accuracy, they should not be relied upon and potential buyers are advised to recheck the measurements.

